



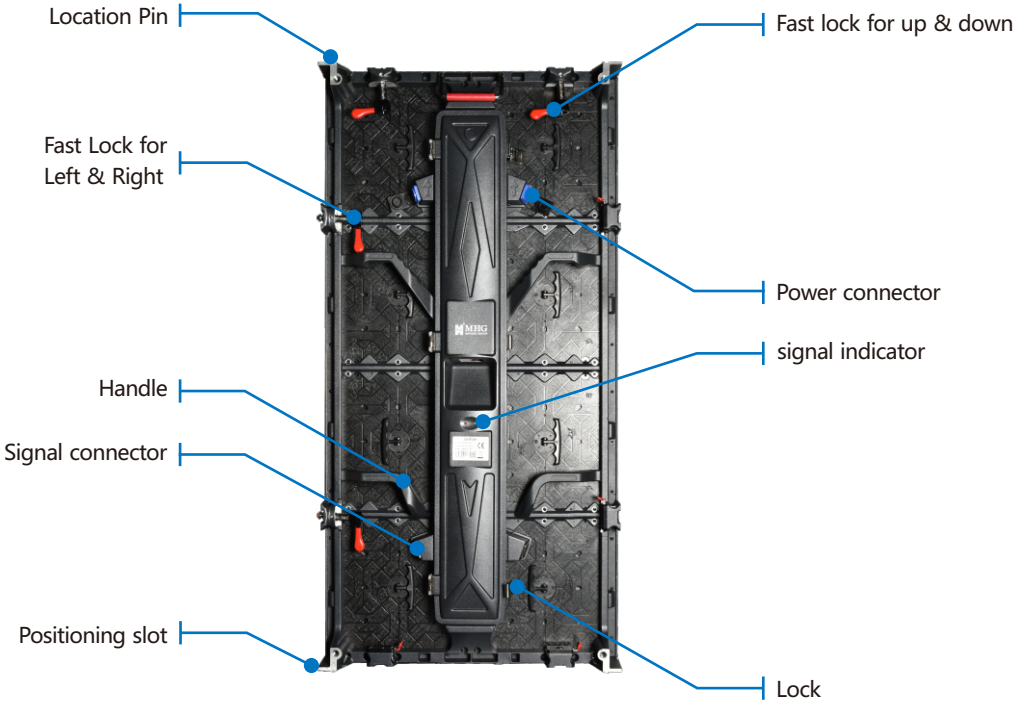
T4 SERIES LED DISPLAY

PRODUCTS FEATURE

T4 series is Die cast aluminum LED screen which mainly used for Theater,stage events,TV stations etc.It's highly combined to make maximum assured the product compatibility & universality to be perfectly used for Theater,stage events,TV stations etc.

01

PRODUCT STRUCTURE

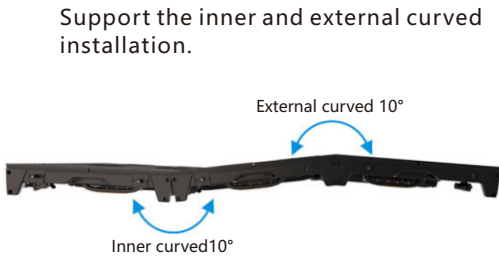


02

PRODUCT FEATURES

1 VARIABLE CABINET SIZE COMBINATION
500×500mm & 500×1000mm to flexibly meet stagecreativity demanding.

2 CURVED INSTALLATION
Support the inner and external curved installation.



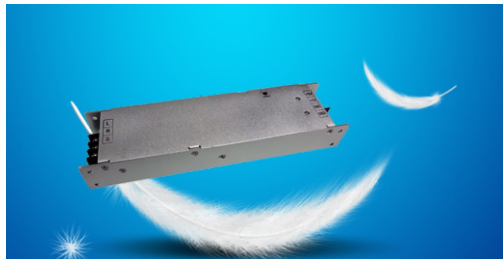
3 DIVERSIFIED INSTALLATION METHODS

Support Hanging, Standing, Fixed installation, etc.



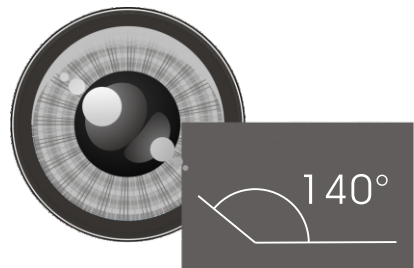
5 LIGHTER WEIGHT

Excellent heat dissipation, mute design.



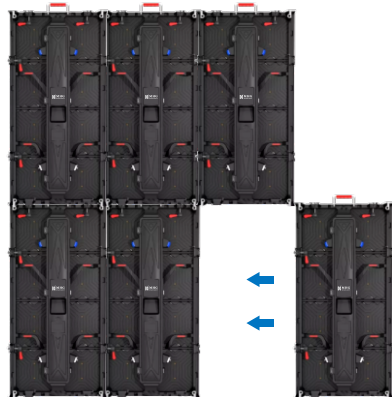
7 BIG VIEW ANGLE

High quality display at all angles.



4 SEAMLESS COMBINATION

Cabinet adopt CNC, the dimension tolerance is less than 0.1mm, delicate display effect.



6 LOW BRIGHTNESS, HIGH GREY SCALE

16bit Gray scale, showing more rich & beautiful colors and clear & delicate images.



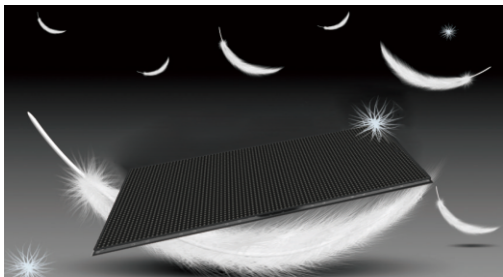
Clear shadow texture



Fuzzy shadow texture

8 SLIM & LIGHTER CABINET

Die cast aluminum cabinet, more lighter & slim, more convenient on transportation & installation.



03

PRODUCTS SPECIFICATIONS

Model	T4-480	T4-390	T4-481	T4-391	T4-291
Working Environment	Outdoor		Indoor		
Pixel Pitch	4.807	3.906	4.81	3.91	2.97
Physical Density (pixel/m²)	43264	65536	43264	65536	112896
LED Type	SMD2525	SMD1921	SMD2020		
Module Resolution (Dots)	52×52	64×64	52×52	64×64	84x84
Module Size(mm)	250×250				
Scanning	13	16	13	16	21
Cabinet Resolution (Dots)	104×208/104×104	128×256/128×128	104×208/104×104	128×256/128×128	168x336/168x168
Cabinet Size(mm)	500×1000/500×500				
Gross Weight (kg)	13.5/8kg		12.5/7.5kg		
Cabinet Material	Die-casting cabinet				
Input Power Consumption (W/m²)	800		750		1000
Max Power Consumption (W/m²)	650		600		800
Brightness(nits)	≥4000		≥800		
Grey Scale	16bit				
Refreshment(Hz)	1920HZ~3840HZ				
Protection Grade	IP65		IP50		
Working Temperature(°C)	-20°C~50°C		-10°C~40°C		
Working Humidity(RH)	10%~95%RH		10%~90%RH		
Maintenance method	Back maintenance		Front or Back maintenance optional		